



ORIGINAL SINCE 2008

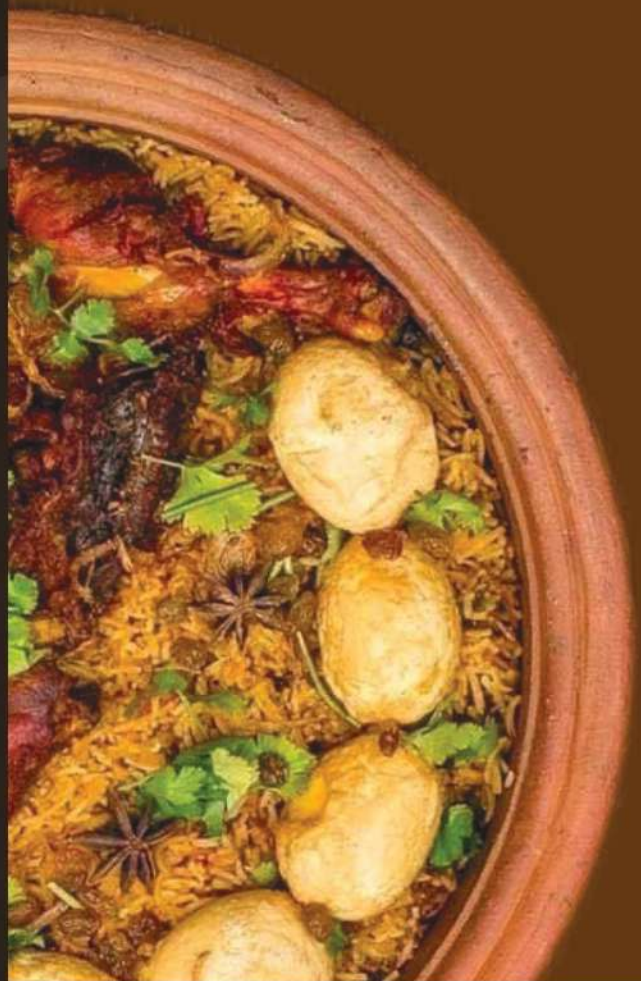
MENU

ORDER ONLINE

WWW.POTBIRIYANI.NET

☎ 0777-330938
0716-669669

✉ potbiryani.lk@gmail.com



RICE POT biriyani (Hyderabad Dhum Biriyani Style)

	Large (For 8)	Medium (For 4)
Chicken	9,600/-	7,600/-
Prawn	10,600/-	8,600/-
Beef	10,600/-	8,600/-
Mutton	13,600/-	9,600/-
Vegetable.....	8,600/-	6,600/-
Sea Food	12,600/-	10,600/-

Along with Tandoori Style Fried Chicken & Watalappam Bowl
Includes:
Meat or Veg in the Pot - Sides (Malay Pickle, Raitha Salad, Maldive Fish Sambol, Watalappam bowl)

LONG GRAIN PAKISTAN BASMATHI OPTION IS AVAILABLE FOR AN ADDITIONAL RS. 2,000/- PER LARGE POT & RS. 1,000/- FOR MEDIUM POT

STRING HOPPER POT biriyani

	Large (For 8)	Medium (For 4)
Chicken	10,600/-	8,600/-
Prawn	11,600/-	9,600/-
Beef	11,600/-	9,600/-
Vegetable.....	10,600/-	6,600/-
Sea Food	13,600/-	10,600/-

Along with Chicken Korma in a Pot & Watalappam Bowl
Includes:
Meat or Veg in the Pot - Sides (Malay Pickle, Raitha Salad, Maldive Fish Sambol, Watalappam bowl)

SINGLE POT & BOX

Standard BOX

Chicken	700/-
Prawn	900/-
Beef	1000/-
Mutton	1300/-

With Malay Pickle and Raitha Salad packed in a box

Single Pot Biriyani

Chicken	850/-
Prawn	1100/-
Beef	1300/-
Mutton	1500/-

With Maldive Fish, Malay Pickle and Raitha Salad

Special BOX

Chicken 1500/-
With Fried Chicken
Masala Chicken
Malay Pickle
and Raitha Salad

Special POT

Chicken 1600/-
With Fried Chicken
Masala Chicken
Malay Pickle, Egg
and Raitha Salad

NEWEST ADDITION - SRI LANKAN



RICE & CURRY POT

Served with 4 Vegetables/Papad/Rasam

	Large (For 8)	Medium (For 4)
Chicken	4,600/-	2,600/-
Prawn	5,600/-	3,600/-
Beef	5,600/-	3,600/-
Vegetable.....	3,600/-	1,600/-
Sea Food	7,600/-	5,600/-

YELLOW RICE - GHEE RICE

Served with Black Pepper meat/Potato Kirata/Brinjal Moju /Capsicum Tempered/Malay Pickle & Papad

	Large (For 8)	Medium (For 4)
Chicken	5,600/-	4,600/-
Prawn	6,600/-	5,600/-
Beef	6,600/-	5,600/-
Vegetable.....	4,600/-	3,600/-
Sea Food	8,600/-	6,600/-

ASIAN POT - NAASI GORENG

Along with Chilli Chicken, Bulls eye eggs, Prawn crackers & Chilli Paste

	Large (For 8)	Medium (For 4)
Chicken	8,600/-	6,600/-
Prawn	9,600/-	7,600/-
Beef	9,600/-	7,600/-
Sea Food	11,600/-	9,600/-

ASIAN POT INDONESIAN FRIED RICE

Along with Chilli Chicken, Vegetable Chop suey & Chilli Paste

	Large (For 8)	Medium (For 4)
Chicken	8,600/-	6,600/-
Prawn	9,600/-	7,600/-
Beef	9,600/-	7,600/-
Sea Food	11,600/-	9,600/-

KOTTHU POT

Along with Kochchi meat/Japanese Omellette & Chilli Paste

	Large (For 8)	Medium (For 4)
Chicken.....	7,500/-	5,500/-
Prawn	8,500/-	6,500/-
Beef	8,500/-	6,500/-

Single Pot

Chicken 800/-
With Fried Chicken/Omellette & Chili Paste

SIDES & BITES

	Large (For 8)	Medium (For 4)
Tandoori Style Fried Chicken/Korma	3,000/-	1,700/-
Chilli Chicken/Deville/Masala	3,000/-	1,700/-
Beef Pepper Curry/Masala/Korma	4,500/-	2,500/-
Hot Battered Prawn/Fish	6,500/-	3,500/-
Jaffna Cheese Omelette.....	3,500/-	2,500/-
Beef Stew with Vegetables	6,500/-	4,500/-
Hadallo Fried	3,500/-	2,500/-

DESSERTS

	For 6-8 Adults
Watalappam POT	2,500/-
Caramel POT	2,500/-
Chocolate Mousse POT	3,000/-
Watalappam CUP	200/-
Brownies X 2	500/-

OUR BRANCHES

DEHIWALA

91D PAPILIYANA ROAD, DEHIWALA.
(BELLANTHARA ROUNDABOUT)

RATHMALANA

102B NEW AIRPORT ROAD, RATHMALANA.

PELAWATTE

OPPOSITE, COOL PLANET CAR PARK.PELAWATTE

COLOMBO 4

BAMBA FOOD SQUARE, GALLE ROAD.BAMBALAPITIYA
OPP - BAMBA FLATS